

CONSERVATION



The Newsletter of
The Upper Savannah Land Trust

IN THE LAKELANDS

SERVING EIGHT COUNTIES IN THE WESTERN PIEDMONT OF SOUTH CAROLINA

► SPRING 2012

ANOTHER GOOD CONSERVATION YEAR

Donors Continue to Seek USLT Protection

Over 2,000 more acres are now conserved for future generations to enjoy as the USLT closed out 2011. Details are shown on Page 2.

An easement for Rogers Crossing and Tree Farm, 344 acres, was accepted from Bill Rogers in Abbeville County. "I feel very fortunate that in the Upper Savannah Land Trust I have found the correct conduit to appropriately protect a portion of the land that my great-great-great-grandfather Francis B. Clinkscales owned. What a wonderful feeling to know that I am leaving the streams, fields, forest and vistas for future generations much as my ancestors saw them," says Rogers.

William R. Warner and John H. Warner donated an easement with tracts in Greenwood, Laurens and McCormick Counties consisting of 773 acres. Bill says "The conservation easement that my brother and I made was able to preserve the Century Farm which has been in our mother's family for almost 150 years."

William R. and Kristie Warner donated an easement on timber land in Greenwood County. Their Stoney Hill, LLC easement covers 225 acres.

C. Clarke Rushton in Saluda County is a full-time farmer on land owned by his parents and additional tracts he has acquired. A dairy farmer for much of his adult life, Clark now grows hay, timber, dairy replacement heifers and is starting a beef cow herd on his 234-acre Saluda Ridge Farm.

Other easements in Greenwood County include Robert M. Erwin, Jr., 111 acres, Ballentine Residential Properties, LLC, owned by Bal and Kathryn Ballentine, 240 acres, and Jeffrey and Jane Dean, 204 acres.



2011 Easement Donors from left rear: Bill Rogers, John H. Warner, William R. Warner. Left front: Robert M. Erwin, Jr., C. Clark Rushton, Jeffrey A. Dean. Not pictured: Bal Ballentine.

ANNUAL MEETING SET FOR MAY 15

Upper Savannah Land Trust Annual Meeting will be held at the Federal Building Arts Center in Greenwood, SC on Tuesday, May 15, 2012 beginning at 6 pm. A barbecue meal will be served.

Guest speaker will be Leonard Todd, author of *Carolina Clay: The Life and Legend of the Slave Potter, Dave*. When Todd discovered that Dave, a now-celebrated slave artisan of the antebellum South, had been owned by his family, he traveled from his home in Manhattan to South Carolina to uncover the stirring story.

Members planning to attend should RSVP to Rick Green at rgreen@uppersavannah.com or call (864) 941-8072 by May 11.

UPPER SAVANNAH LAND TRUST

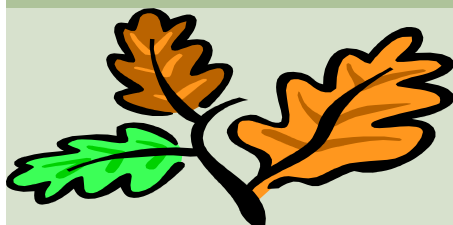
The mission of the Upper Savannah Land Trust is to encourage and support conservation of natural and scenic lands, farms, forests, waterways, and open spaces in our eight-county area: **Abbeville, Anderson, Edgefield, Greenwood, Laurens, McCormick, Newberry, and Saluda** Counties.

Inside this issue:

President's Desk	2
Board Membership	2
Annual Report	2
Donor Listing	3
Steven Creek Hike	3
Conservation News	4

**Conservation
in the Lakelands**
Volume 7, Issue 1

UPPER SAVANNAH



Land Trust

**P. O. Box 918
Greenwood, SC 29648**

Executive Director

Wallace Wood

Officers

Tim Burke, President
Brad Thompson, Vice-President
Rick Green, Secretary
L. B. Adams, Treasurer
Peggy Adams, Past-President

Board Members

Tom Brooks
Judy Burns
Russ Burns
Billy Fleming
Bryan Green
Roy Hemphill
Buddy (O.L.) Johnson
Mike Mallon
Patrick Morgan
Hugh Riley
Andy Robinson
Jimmy Sanders
Charles Schulze
Eric Smith
Frank Wideman

Visit us at our web site:

www.scuslt.com

From the President's Desk . . .

With the early arrival of spring, we once again take the time to reflect on the past year's triumphs and shortfalls. The USLT as a whole has been very successful in a time of uncertainty in the conservation world. With 14 new easements in 2011, the USLT brought its total easement acreage to over 30,000.

Kudos to all the land owners, land trust staff and volunteers for all the hard work and diligent effort to get these easements recorded by year end. Why the rush? As I alluded to earlier, the conservation world is currently in a state of limbo. The past legislation granting potential benefit to donors expired on Dec 31, 2011. While the new legislation "HR bill 1964" has tremendous bipartisan support, more that 300 co-sponsors exceeding that of any other tax bill, it currently sits in limbo awaiting action.

Past experience shows that the potential for incentive to the private landowner has been a catalyst for the protection of more that 47 million acres in the United States— lands that have been saved from development, to be left as privately owned forests, agriculture land, and open spaces. We are all very hopeful that this bill can gain some reasonable traction and become a permanent piece of legislation.

On another note, each May we gather supporters of the land trust for our annual meeting and dinner. As always, we invite you to bring your family and friends to be part of our special day, to learn and to share what the true benefit of conservation is to our community and country. I look forward to seeing you soon.

Tim

Annual Report: Growth Continues in 2011

The USLT conserved more than 2,131 acres in 2011, making it the fourth largest land trust agency in South Carolina. The USLT now holds conservation easements on **30,418** acres in the western Piedmont. The trust continues to hold an easement in Aiken County in order to accommodate a donor who had other easements held by the USLT within its service area. All other easements are in the service area. The total number of easements held by the USLT increased by 7 to 58 in 2011. A breakdown of the easements is shown below:

CONSERVATION EASEMENTS AND ACRES BY COUNTY		
County	Number of Easements	Acres
Abbeville	2	482
Aiken	1	342
Anderson	2	800
Edgefield	4	3,292
Greenwood	23	8,799
Laurens	7	2586
McCormick	6	12,076
Newberry	7	1,317
Saluda	6	724

Membership Donors Supporting USLT Conservation Efforts in 2011-2012

The Upper Savannah Land Trust is a 501 (c)(3) membership organization dedicated to protecting the natural beauty and integrity of our area. We gratefully acknowledge the 2011- 2012 support of these donors:

Savannah/Saluda Society **\$3,000 or more**

Peggy and B Adams
Bal and Kit Ballentine
Kevin Connelly
Davis Family Foundation, Inc.
Jeffery and Jane Dean
Robert and Martha Erwin
Bill Rogers
Hamp and Jill Warner
Bill and Kristie Warner

Foundation **\$1,500 – \$2,999**

Exxon Mobil Foundation

Guardian **\$1,000 – \$1,499**

Russ and Judy Burns
Capsugel Holdings, US

Sponsor **\$500 – \$999**

Mickey and Pam Avrett
Christian Hendricks
Storey Foundation

Patron **\$250 – \$499**

AgSouth Farm Credit
W. K. Brown Timber Corporation
Gail and Ken Kinard
Tommy Newton
Mr. And Mrs. William J. Park
Southern Resources, LLP
Brad and Pam Thompson
Thompson Forest Consultants
Wallace and Susan Wood

Family **\$100 – \$249**

J. P. Anderson, Jr.
Michael Bedenbaugh
Elyse Benson
Al and Cynthia Bryan
Mac and Linda Cobb
Rossie Corwon
Armena Ellis
Millen Ellis
Eddy Ellison
Judith and Philip Epps
Elsie Fields
Dave and Shirley Hildebrand
Yates and Sandra Johnson
John and Virginia Kemp
Becky and Ben Lawrence
Town of Little Mountain
Bobby and Georgette Livingston
Norma and John McAlhany
Wes McAllister

Lizanne and John Melton
Andy Robinson
Charlotte A. Ross
Craig and Cathy Stuckey

Friend **\$50 – \$99**

Paul and Robyn Agnew
M. C. (Nikki) Blease
Citizens Trust Co.
Margaret and Reid Conrad
Anne Craig
Ken Driggers
Carolyn P. Ehle
Billy Fleming
John Folk, Jr.
Rick Green
Wayne and Connie Griffis
Jo Claire and Harry Hickson
John LeRoy
Log Creek Timber Co., Inc.
George and Pat McKee
G. Walker Moore
Kenny Poston
Hugh Riley
Paul Ruelle
Jimmy Sanders
W. Virgil Wall, Jr.
John and Anna Welborn

Thank you to all!

10

Visit to the Stevens Creek Heritage Preserve

The USLT-sponsored hike led by SCETV "Expeditions" host Patrick McMillan explored the many ice-age remnant plants of the Stevens Creek Heritage Preserve on March 24. Good weather and enthusiastic hikers encountered many of the 15 rare plants species. The 1.5-mile Stevens Creek hike is becoming an annual USLT event.



Group entering the Heritage Preserve



Native honeysuckle (Lonicera sempervirens)



Patrick describing unique area

Conservation News

Big Gains in Voluntary Land Conservation Despite Recession

The first census of land trusts in five years found 10 million new acres conserved nationwide since 2005, including a 42% increase here in South Carolina.

The 2010 National Land Trust Census, released by the Land Trust Alliance, shows that nationwide voluntarily protected land increased 27 percent between 2005 and 2010.

The census is online at www.lta.org/census.

A total of 47 million acres—an area over twice the size of all the national parks in the contiguous United States—are now protected by land trusts. A greater percentage of the new acreage comes through local and state land trusts like the Upper Savannah Land Trust

Land trusts in South Carolina have protected 245,576 acres—this represents a 42% increase in acres

conserved since 2005. South Carolina ranks 18th in the nation in acres conserved, and 4th in the Southeast.

There are now 24 land trusts operating in South Carolina, including 18 staffed groups and 2 all-volunteer groups.

With over 30,000 acres conserved, the Upper Savannah Land Trust is the 4th largest in the state.

Conservation easements conserve vital lands while easing tax burdens on donors.

We Need Your Support

Please consider a tax-deductible donation to the Upper Savannah Land Trust in one of our membership categories:

Friend (\$50 – \$99) Family (\$100 – \$249) Patron (\$250 – \$499)
Sponsor (\$500 – \$999) Guardian (\$1,000 – \$1,499)
Savannah/Saluda Society (\$3,000 or more)

UPPER
SAVANNAH



Land Trust
P. O. Box 918
Greenwood, SC